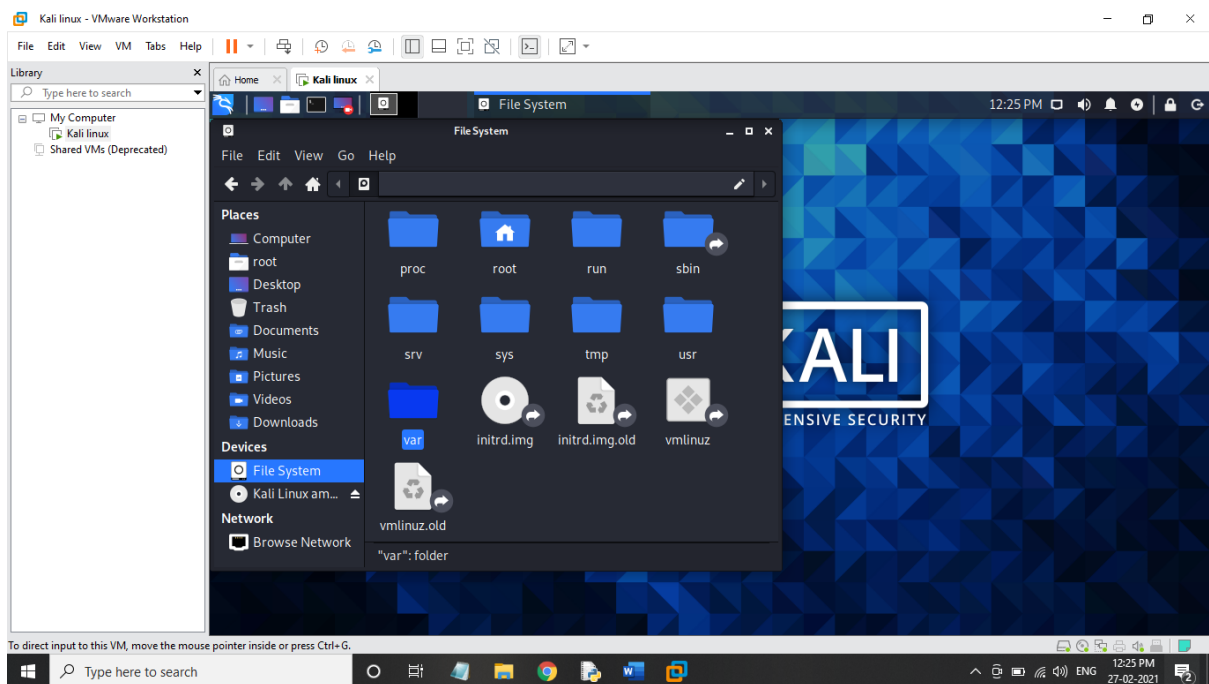
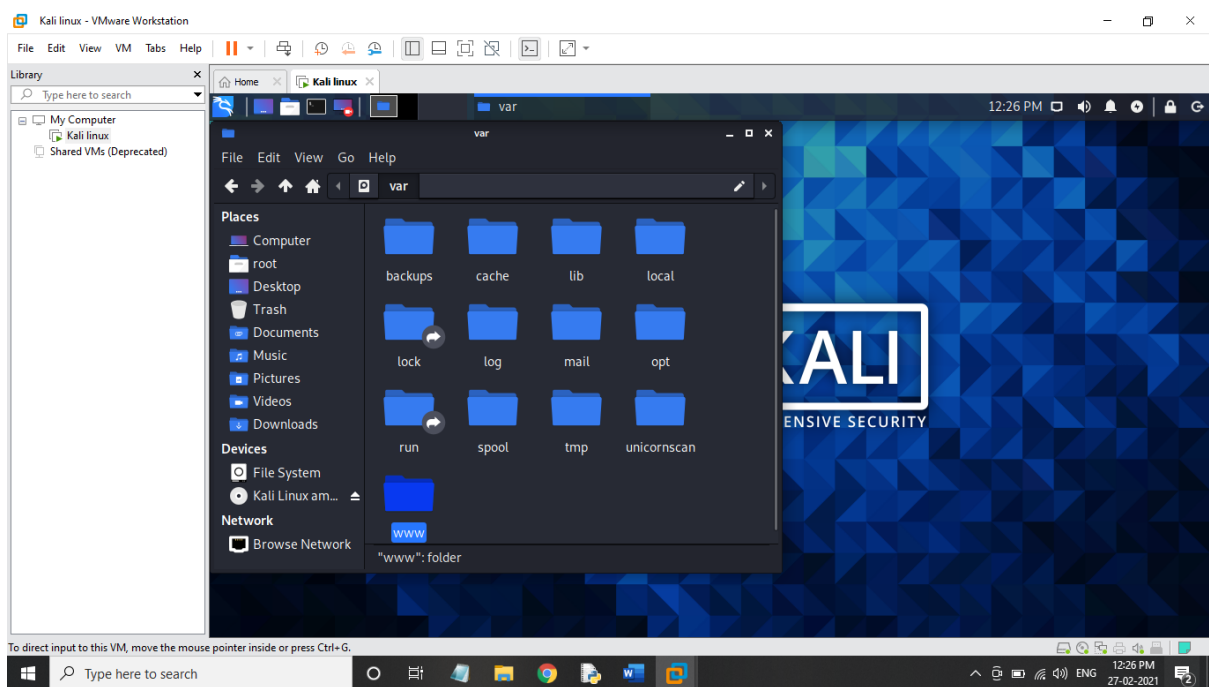


PRACTICAL NO.3 : XSS ATTACK

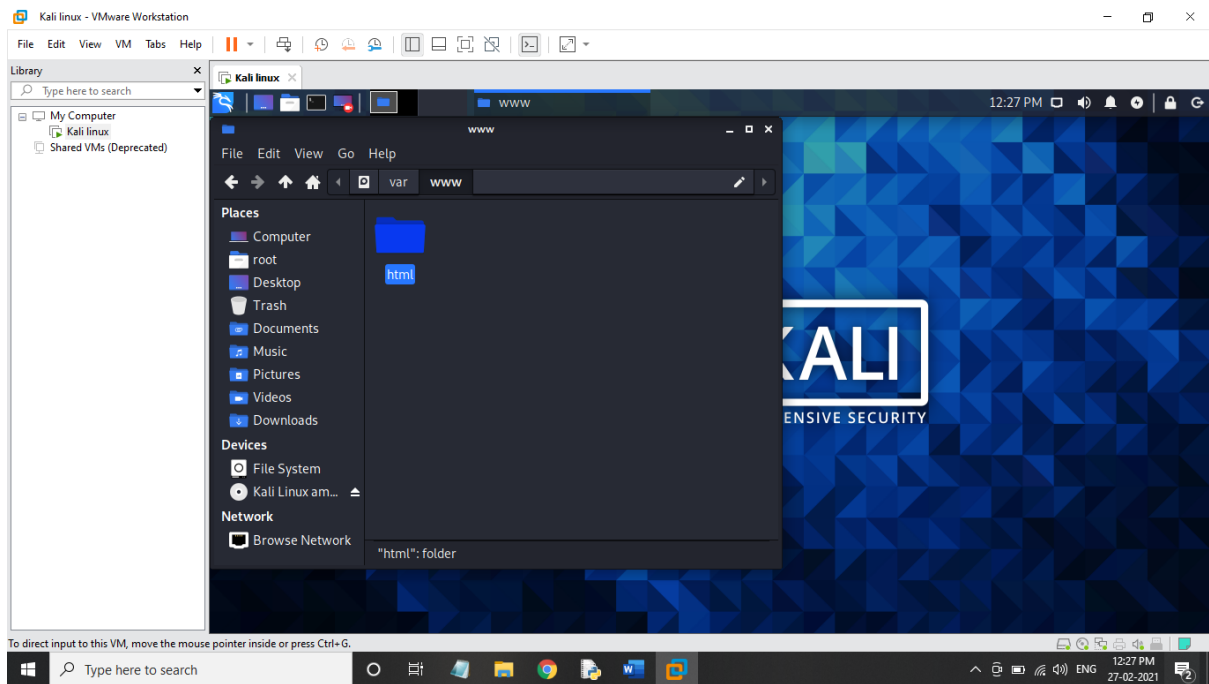
Step 1:- open files and go to 'var'.



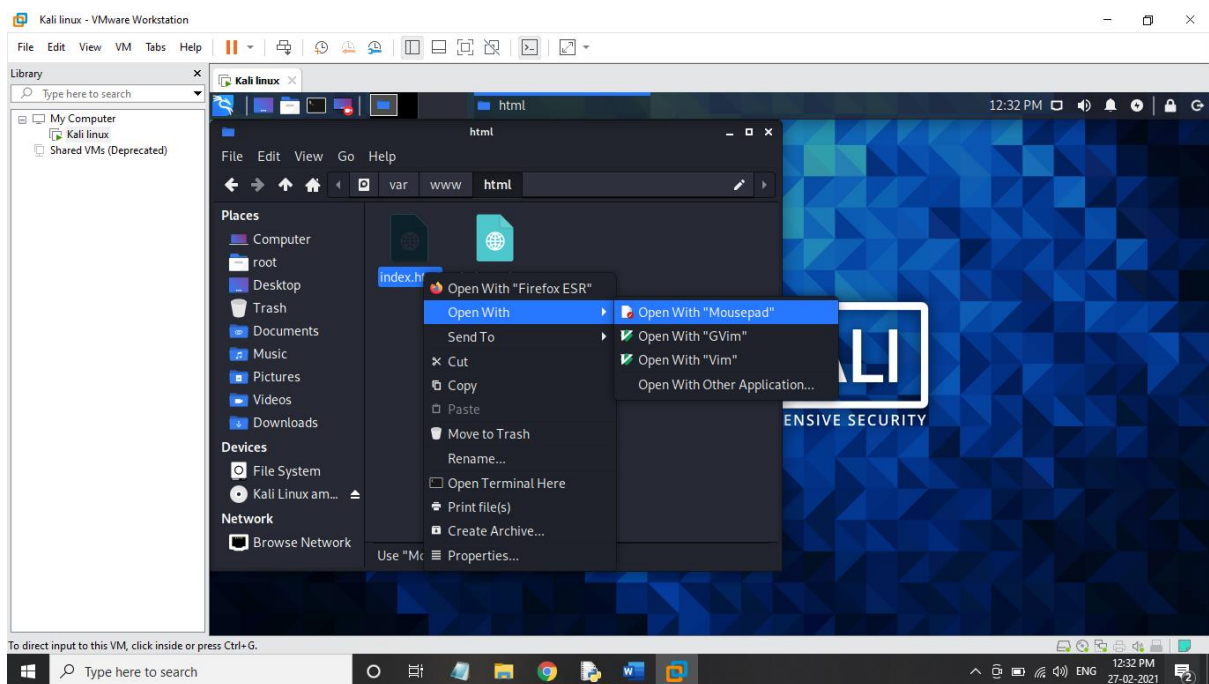
Step 2:- then click on www.



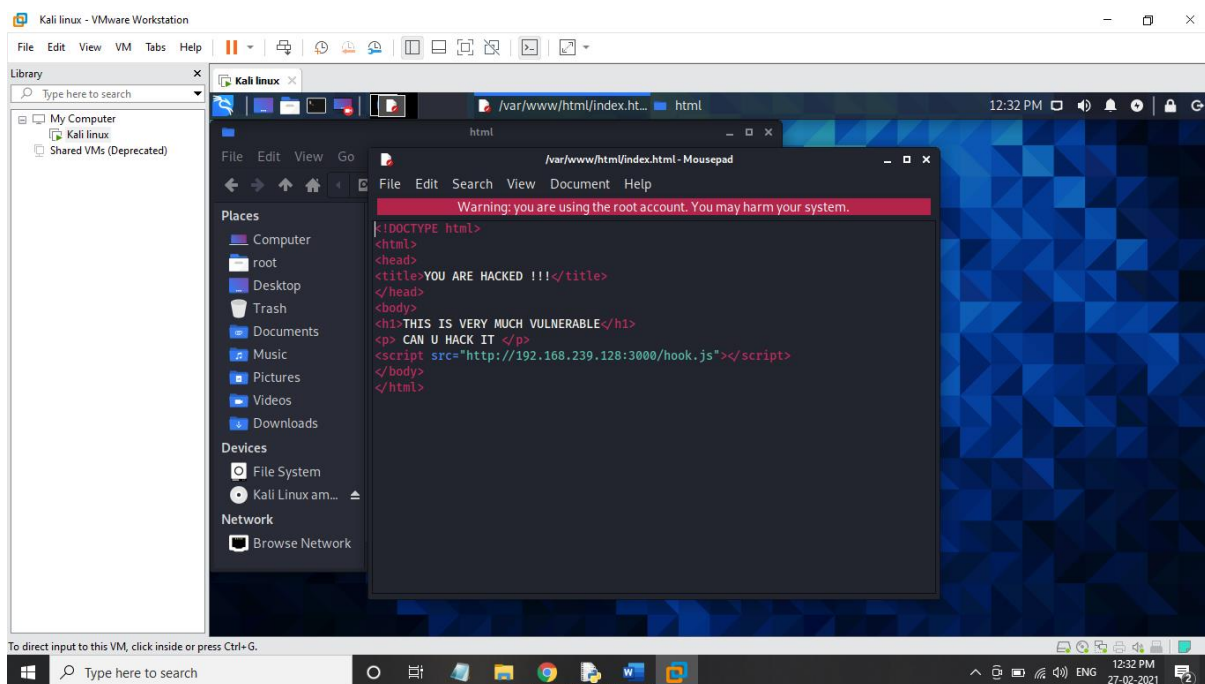
Step 3:- click on html.



Step 4 :- click on index.html



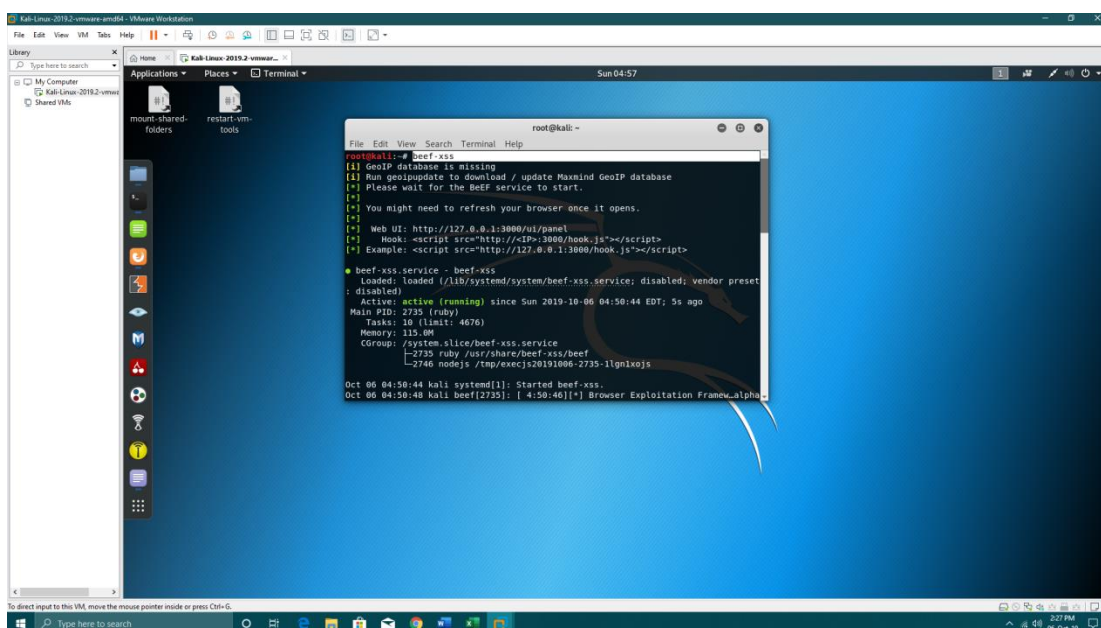
Step 5:- write a basic code for a website in it and save it.



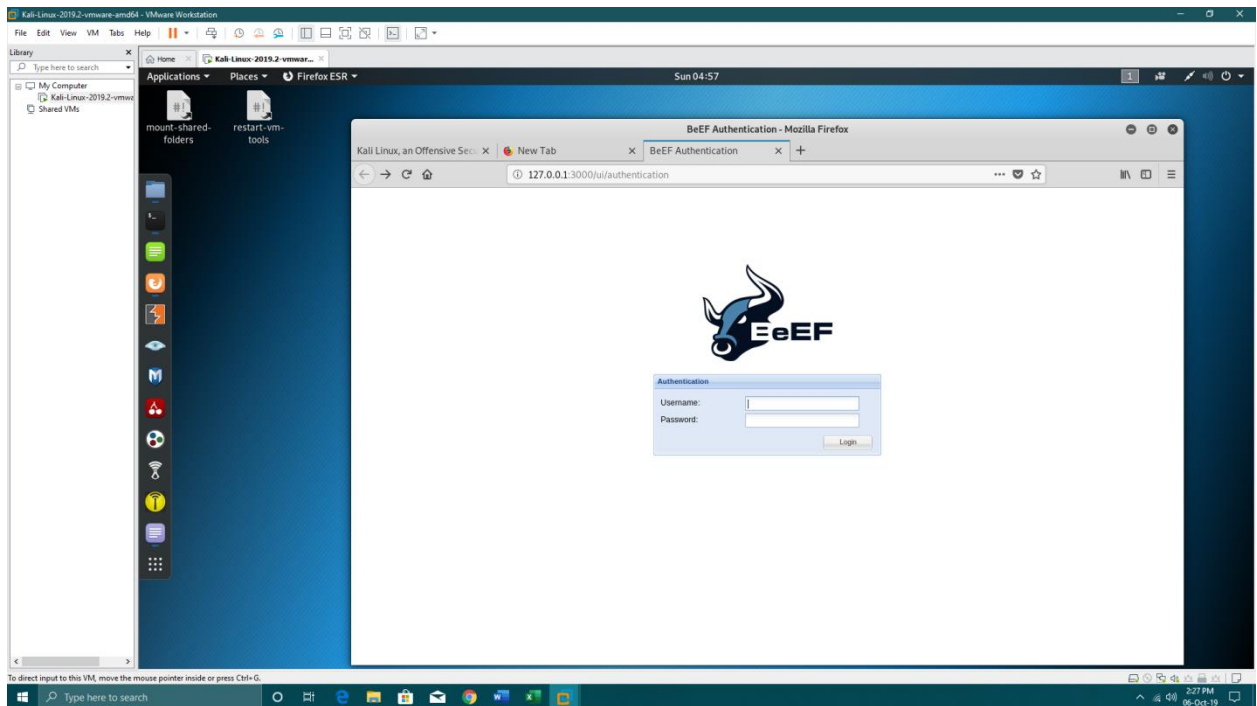
Step 6:- open terminal and write xss-beef if it shows any error then write gedit /etc/beef-xss/config.yaml , a file will open just remove the userid and password and save it and run xss-beef in terminal it will show login page and just login without entering any id or pass as you removed it.

OR

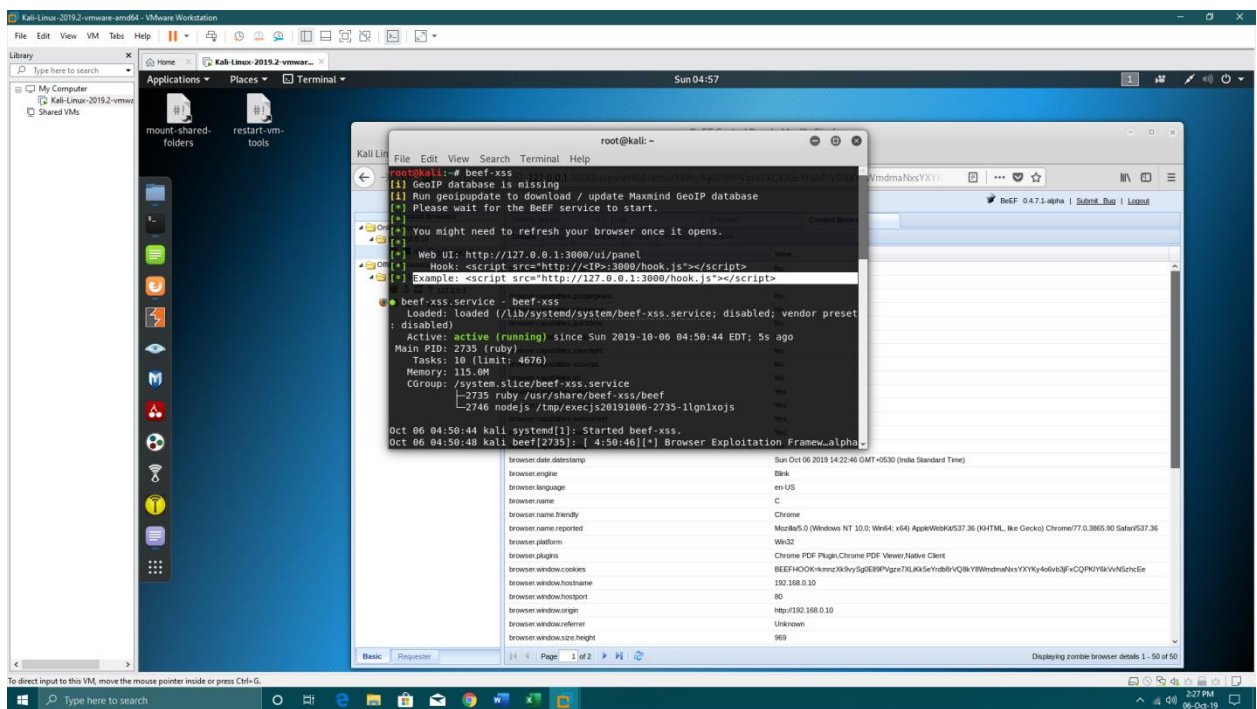
Step 7:- if it doesn't show any error while writing xss-beef in terminal and it directly opens login page then just enter the id as beef and password also beef



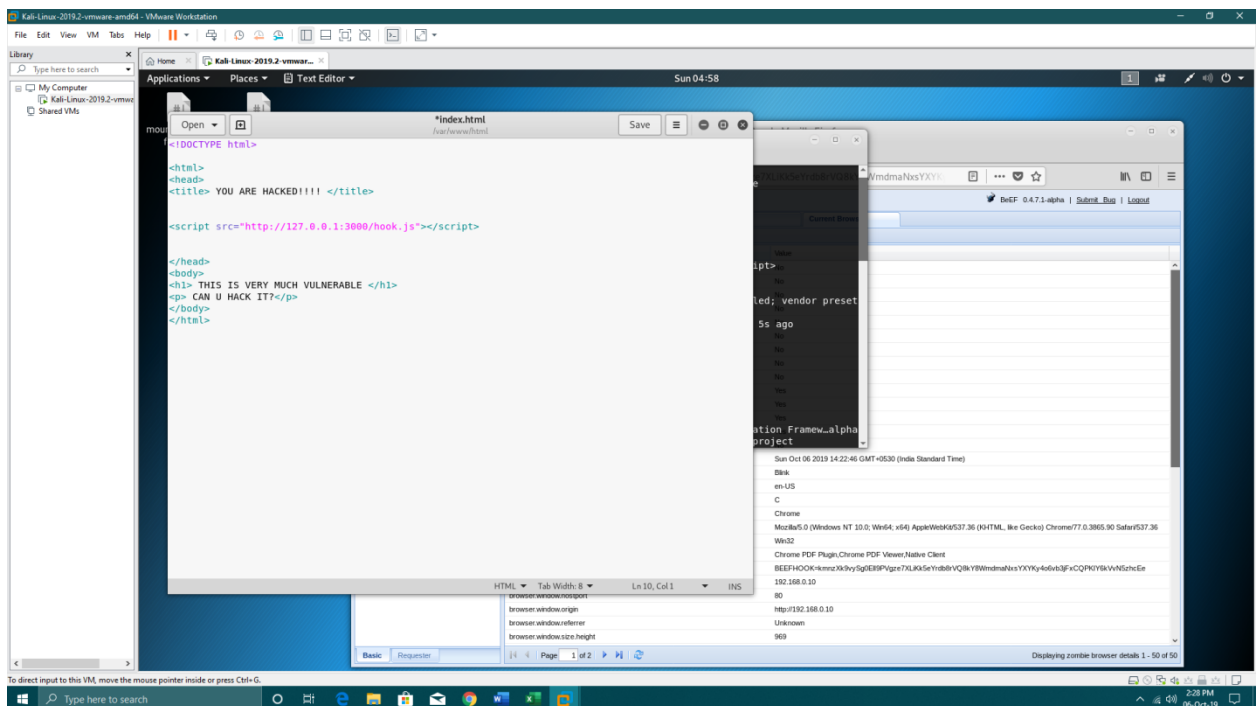
Step 8:- click on login.



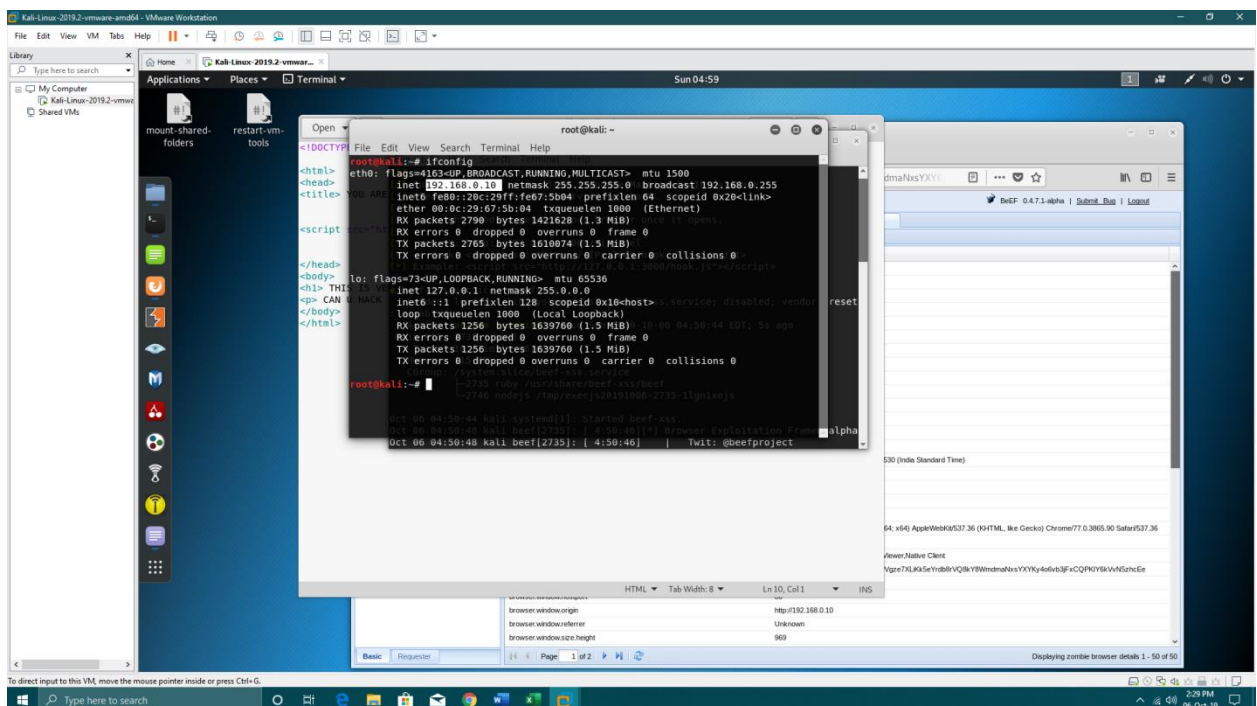
Step 9:- copy the script src .



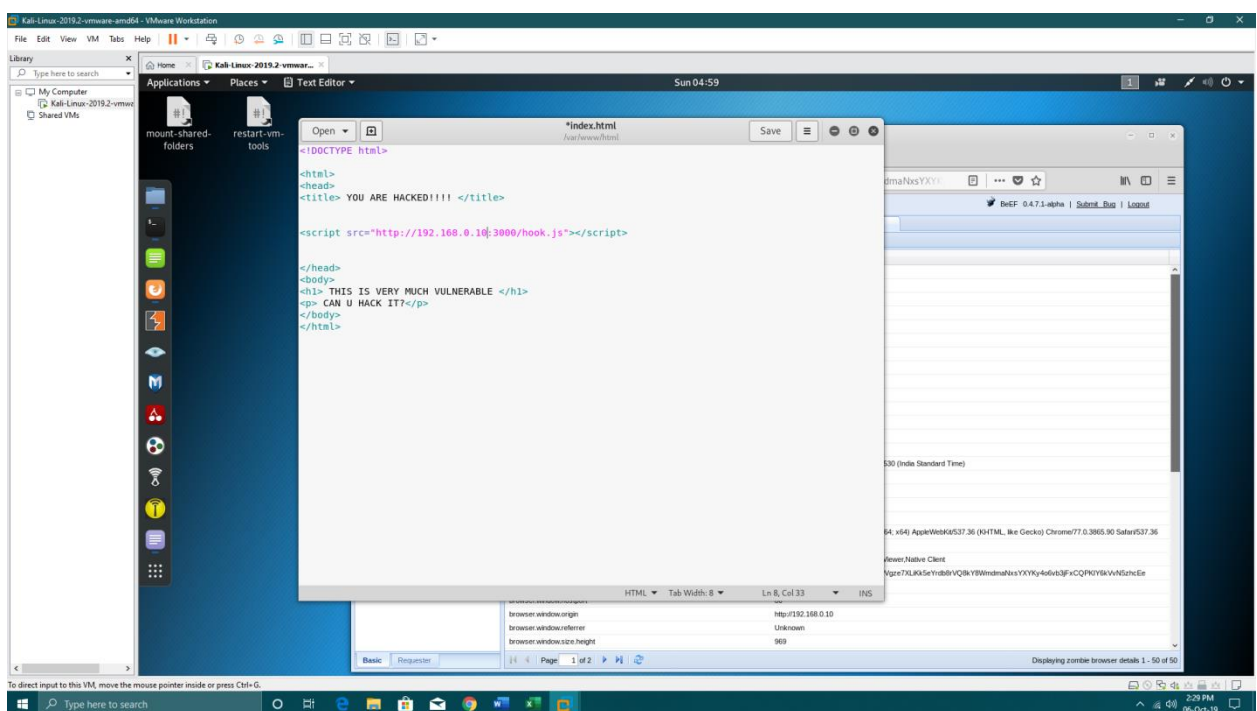
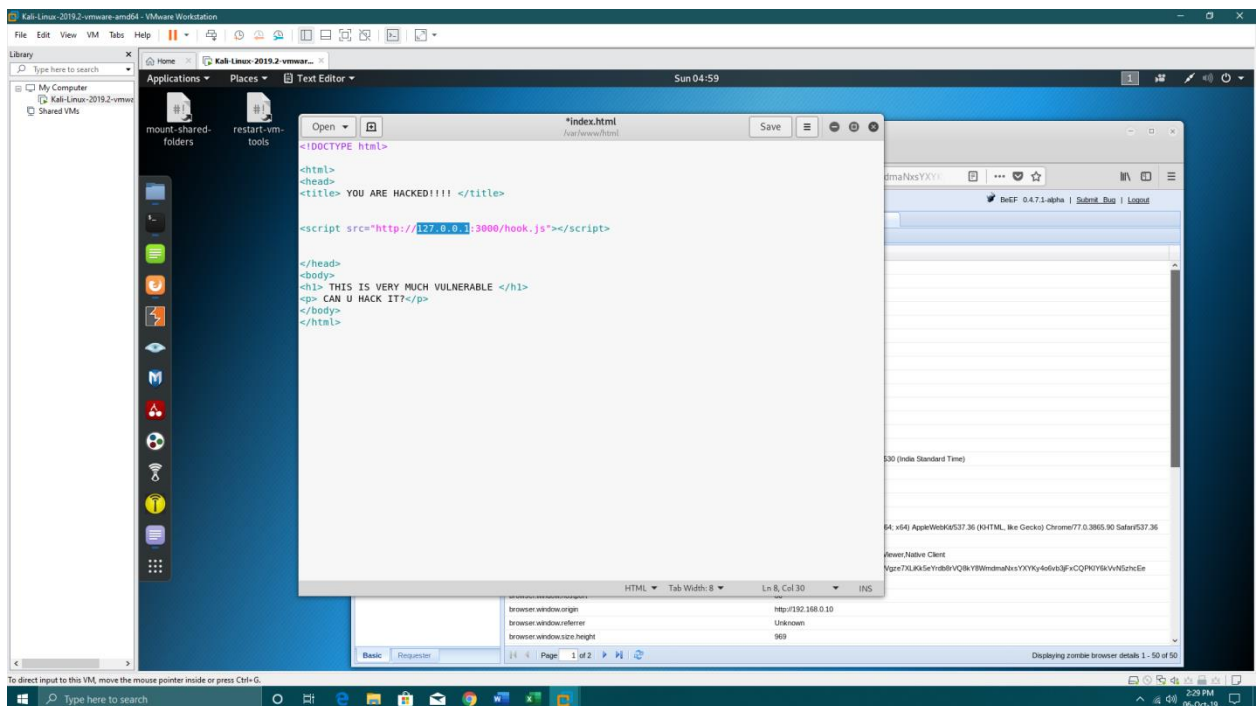
Step 10:- paste it on the index file after title.



Step 11:- open new terminal and write ifconfig. And copy your ip address.



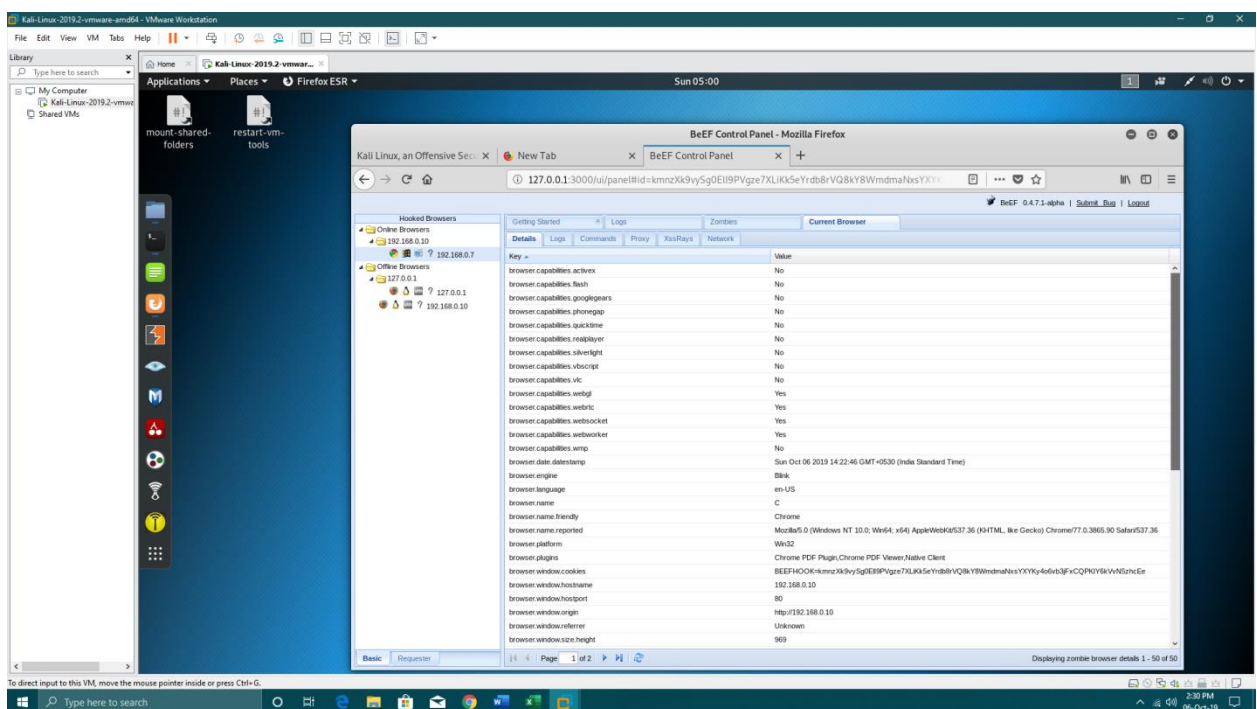
Step 12:- paste your ip address in place of your hostip i.e 127.0.0.1 and save it.



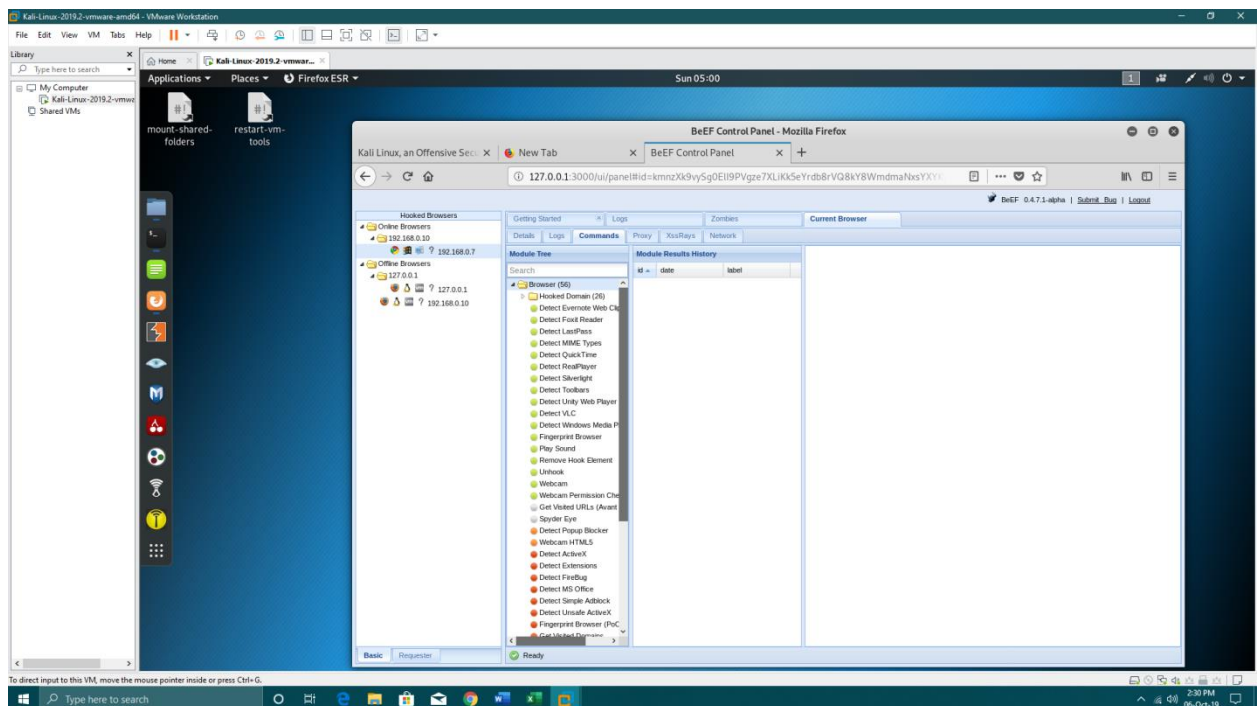
Step 13:- open chrome in windows and write your ip



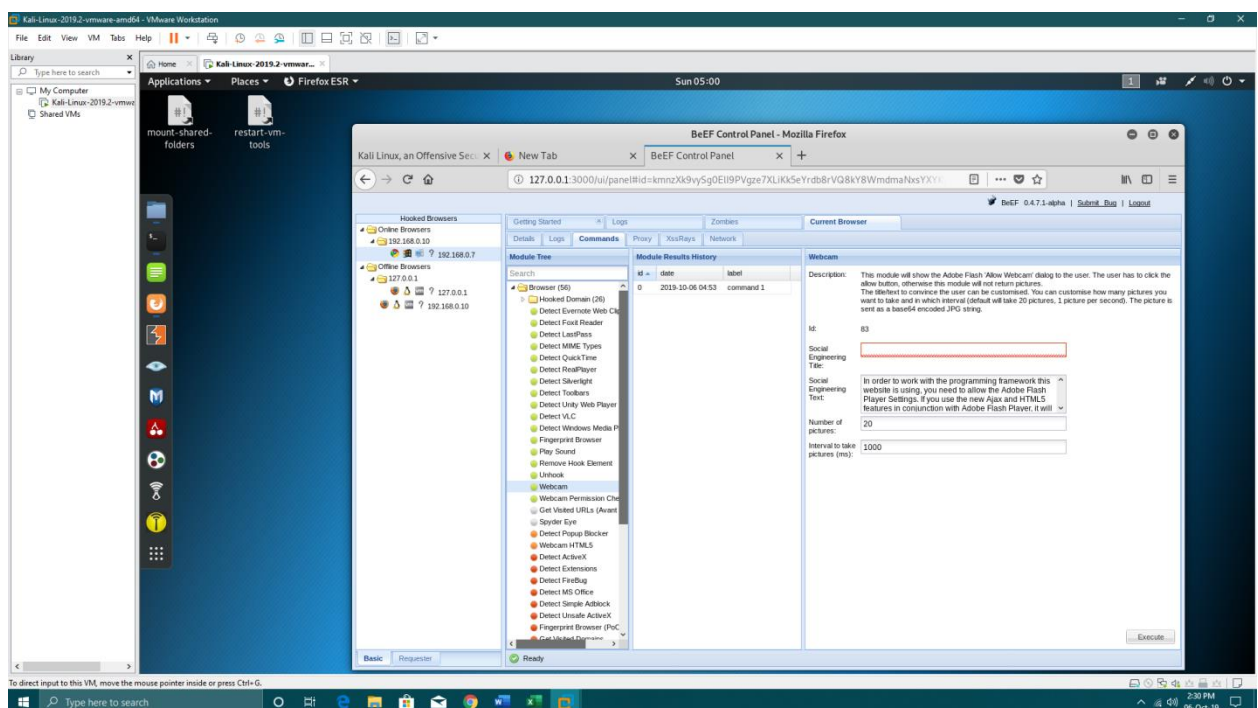
Step 14:- in beef in online browser it will show Microsoft symbol and a chrome symbol click on it.



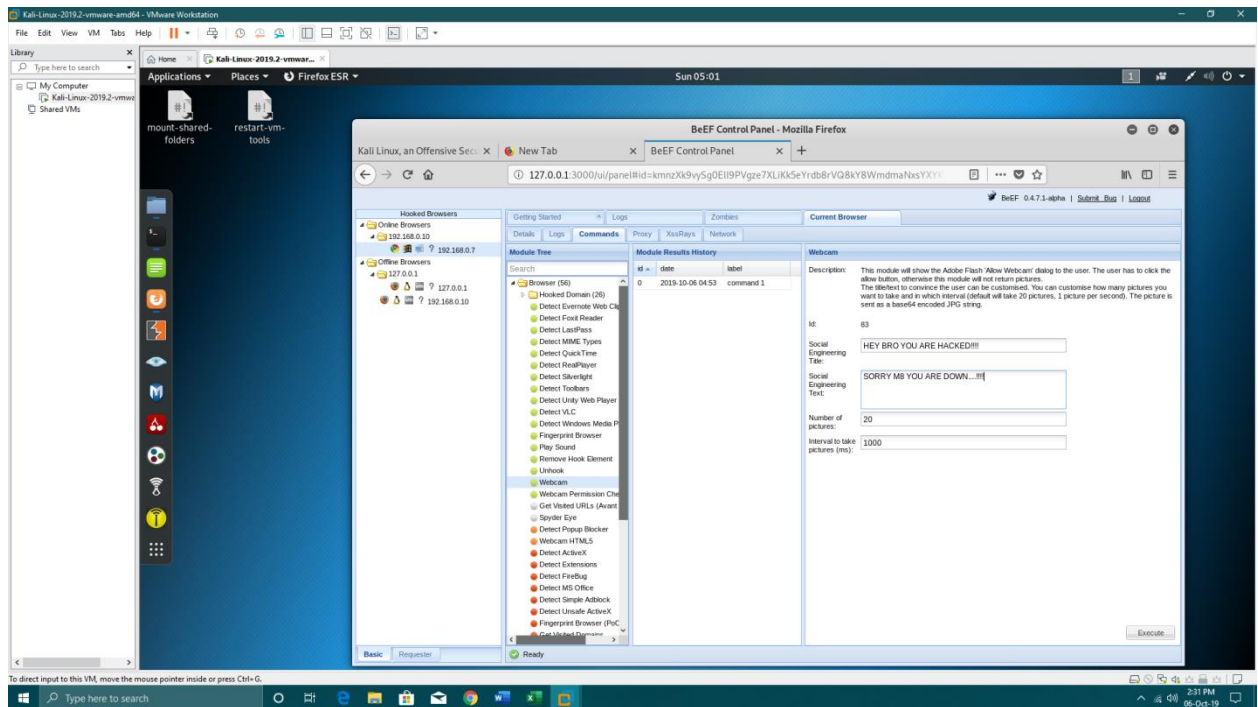
Step 15:- click on command and click on browser.



Step 16:- in browser click on webcam.



Step 17:- in webcam type the anything in social engineering title and text you want to display into your windows chrome browser and then click on execute.



Step 18:- it will automatically change after you click on execute and open chrome browser.

